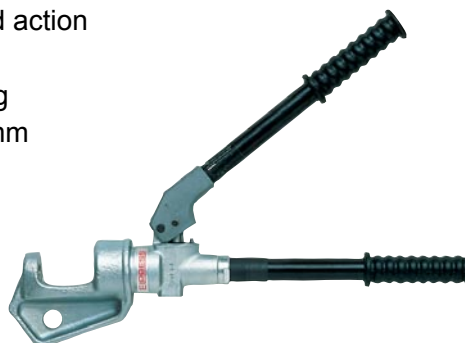


Identification Part number Drawing Dimensions in mm

Crimp tool
Hydraulic handtool
Pressing force 130 kN

09 99 000 0385

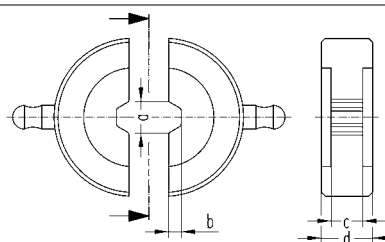
- fast forward action
- storagebox
- weight 6.4 kg
- length 620 mm



Crimp dies
DIN 46 235
(supplied as apair)
use in combination
with die holder



09 99 000 0386
09 99 000 0387
09 99 000 0388
09 99 000 0391
09 99 000 0392
09 99 000 0393
09 99 000 0394

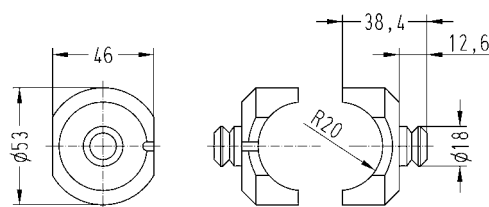


Part-Number	Wire gauge	acc. to DIN 46 235	a	b	c	d
09 99 000 0386	16 mm ²	B8 DIN	8	3.2	8	13
09 99 000 0387	25 mm ²	B10 DIN	10	3.8	10	13
09 99 000 0388	35 mm ²	B12 DIN	12	4.7	10	13
09 99 000 0391	50 mm ²	B14 DIN	14	5.5	10	13
09 99 000 0392	70 mm ²	B16 DIN	16	6	13	13
09 99 000 0393	95 mm ²	B18 DIN	18	7.3	15	15
09 99 000 0394	120 mm ²	B20 DIN	20	8	15	15

Die holder

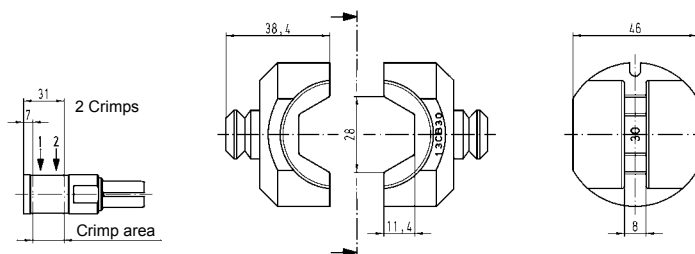


09 99 000 0389



Crimp die
Wire gauge 240 mm²

09 99 000 0801



**Removal tool
for 100 A crimp contacts**

09 99 000 0383

